



# CURTAINSIDER TRUCK BODIES



Morgan Curtainside truck bodies open-up much more cargo handling possibilities. Cargo can be loaded and unloaded from either side, as well as the rear, safely and efficiently. Ideal for industries such as millwork and cabinetry, windows and doors, plumbing and heating.

# CURTAINSIDER TRUCK BODIES

## STANDARD FEATURES

- **Body Lengths** – 18', 20', 22', 24', 26' & 28'
- **Body Widths** – 96" & 102"
- **Body Heights** – 85", 91", 97", 103" & 109"
- **Front-end Assembly** – 5/8" white FRP front-end panel / 10 ga. steel front frame, painted white / Clearance lights and reflectors to meet FMVS108 specifications / Diagonal front corners with light protector
- **Subframe** – 6" channel perimeter with 4" crossmembers on 12" centers and 6" structural long rails, painted black
- **Floor Type** – 1-1/8" laminated hardwood, fastened in staggered pattern, galvanized steel threshold with rear drain trough
- **Roof Assembly** – .032" aluminum roof panel, low profile, anti-sag roof bows on 24" centers
- **Side Curtains** – Curbside and roadside curtains (white), with stainless steel buckle close tensioners on 24" centers and gray valance / Lockable, one handle, quick release ratchet tensioner / Easy operating stainless steel buckles / Lockable, easy opening quick closure with grab handle – at rear / 2x2 panama weave, 28 oz. PVC coated polyester, high gloss, lacquered finish / rolling, three position center support with easily operated latch handle
- **Rear Frame** – 10 ga. steel rear frame, painted white / Whiting plastic covered overhead rear door / Clearance lights and reflectors to meet FMVS108 specifications / Rear frame gussets, light protector and rain channel / Grab handle(s)
- **Rear Finish** – 5" structural ICC underride with pooched surface
- **Rear Door** – Plastic covered overhead
- **Mounting** – Extended truck chassis L-channel and Morgan steel-channel U-bolt attachment plates for improved body support



*Rolling multi-positioned side posts*

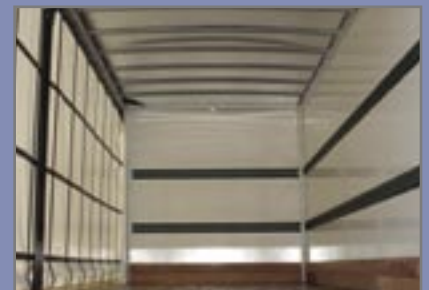


*Rolling multi-positioned side posts*

## OPTIONAL FEATURES



*Optional E-track front and sidewall locations*



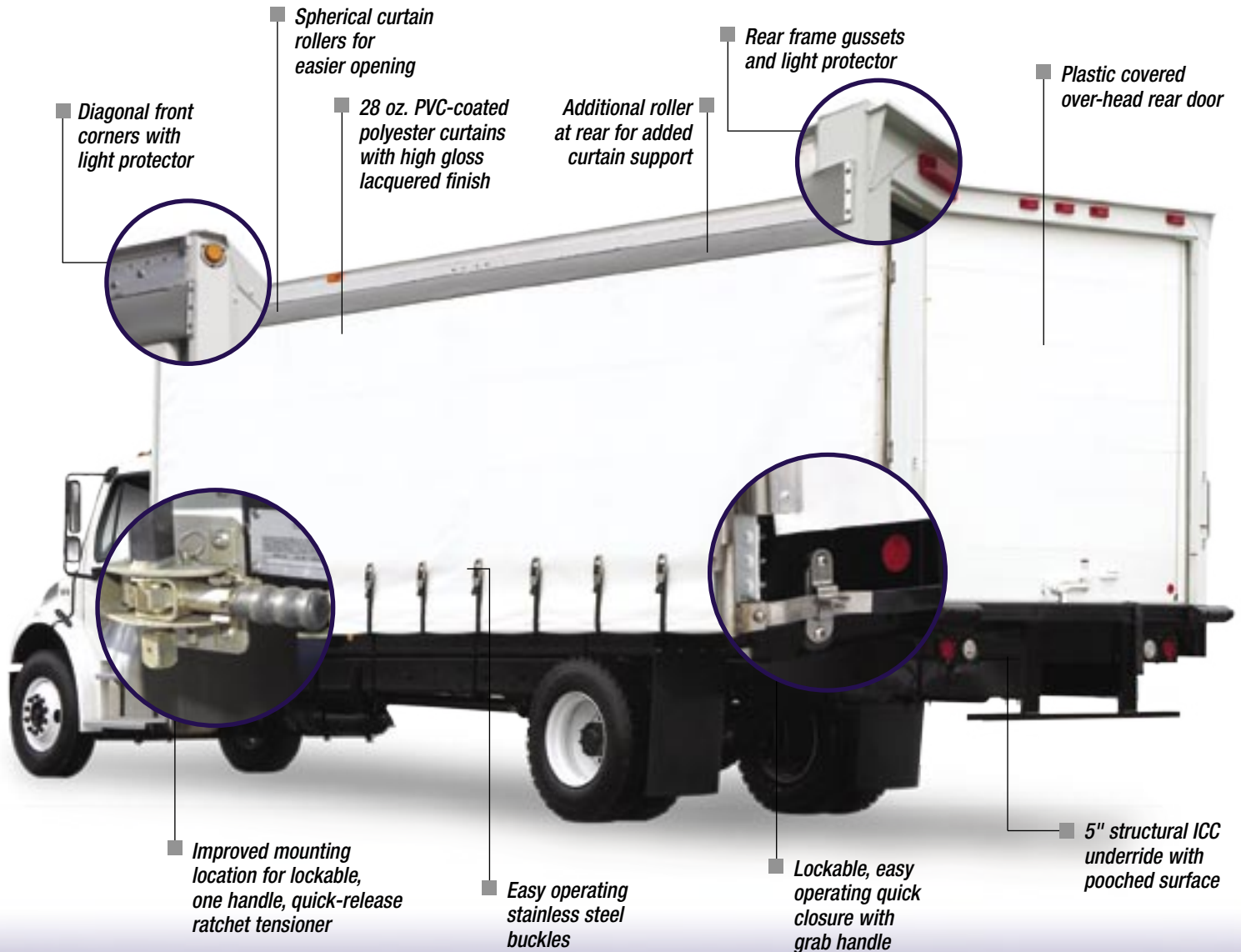
*Optional FRP sidewall*



*Bullrings*

# MORGAN CURTAINSIDER BODIES OPEN UP MANY MORE CARGO HANDLING POSSIBILITIES

Businesses using forklifts to move products also find the Curtainsider ideal for handling cargo safely and efficiently. The Curtainsider curtains are made of highly durable PVC-coated material and come in a variety of colors. Curtains can be opened from either end and feature a lockable, quick-release tensioner handle to close, tighten and keep it secure.



## CUSTOMIZE YOUR MORGAN CURTAINSIDER WITH A VARIETY OF OPTIONS

- Sliding winch assemblies with track mounted under body
- D-rings, Bull rings
- Stake pockets, Floor tie rings
- E-track on front wall
- Load-holder / F-track – floor & ceiling – width & length of body
- 1-5/16" Apitong hardwood floor
- 1-3/8" laminated hardwood
- Tool boxes
- One side FRP
- LED clearance & marker lights with sealed wire harness
- 6" & 10" oak filled dock bumper
- 4" x 12" D-rubber bumper blocks
- 2 panel full opening rear door, with anti-rack hardware
- Curtains available in multiple colors\*
- Graphics\*
- Custom paint\*
- Flush Entry
- Rear mount forklift



\* Lead times may vary, review delivery information with your Morgan Representative or Authorized Morgan Distributor. Additional options and safety features available, contact your Morgan Representative or Authorized Morgan Distributor for complete listing.

## DIMENSIONAL DATA

### HEIGHT / WIDTH DIMENSIONS

Model	Outside Width	Inside Width	Inside Width at Center Support	Outside Height	Inside Height	Side Opening Height	Rear Door Opening	
							Width	Height
GVCD 85	96"	96"	93"	98 ¾"	85 ½"	76.5"	88"	79 ¼"
	102"	102"	99"	98 ¾"	85 ½"	76.5"	94"	79 ¼"
GVCD 91	96"	96"	93"	104 ¾"	91 ½"	82.5"	88"	85 ¼"
	102"	102"	99"	104 ¾"	91 ½"	82.5"	94"	85 ¼"
GVCD 97	96"	96"	93"	110 ¾"	97 ½"	88.5"	88"	91 ¼"
	102"	102"	99"	110 ¾"	97 ½"	88.5"	94"	91 ¼"
GVCD 103	96"	96"	93"	116 ¾"	103 ½"	94.5"	88"	97 ¼"
	102"	102"	99"	116 ¾"	103 ½"	94.5"	94"	97 ¼"
GVCD 109	96"	96"	93"	122 ¾"	109 ½"	100.5"	88"	103 ¼"
	102"	102"	99"	122 ¾"	109 ½"	100.5"	94"	103 ¼"

#### NOTES:

- A. Outside height dimension from bottom of longrail to top of roof crown. Does not include mounting wood.  
 B. Overhead rear doors protrude into top of door opening 1" to 1½" when in the up position.

### CALCULATED WEIGHT (LBS.) - 96" Wide

Body Height	Body Length					
	18'	20'	22'	24'	26'	28'
85	3454	3680	3915	4141	4380	4607
91	3498	3722	3957	4183	4422	4649
97	3542	3764	3999	4225	4464	4691
103	3588	3810	4045	4271	4510	4739
109	3631	3853	4090	4314	4553	4782

### CALCULATED WEIGHT (LBS.) - 102" Wide

Body Height	Body Length					
	18'	20'	22'	24'	26'	28'
85	3561	3796	4039	4271	4520	4755
91	3605	3839	4082	4314	4563	4798
97	3650	3882	4125	4357	4606	4841
103	3696	3928	4171	4403	4652	4889
109	3741	3973	4218	4448	4697	4934

**Weight Includes:** 4" I-beam crossmembers on 12" centers, 6" channel longrails and siderails, 1.12" hardwood floor, 10 ga steel front frame, 5/8" FRP front panel, 28 oz side curtains, removable center supports, quick closures at rear, extruded aluminum top rail, ratcheting tensioners at front, 10 ga steel rear frame, rear overhead rollup door, .032" aluminum roof, 1" roof bow on 24" centers, U bolt mounting with 1 3/4" wood, sealed standard electrical package and DOT underride.

### BODY LENGTH / SIDE OPENING

	Body Length					
	18'	20'	22'	24'	26'	28'
Outside	18' 5¾"	18' 5¾"	22' 5¾"	24' 5¾"	26' 5¾"	28' 5¾"
Inside*	18' ¼"	18' 5¾"	22' ¼"	24' ¼"	26' ¼"	28' ¼"
Side Opening (not including curtain)	17' 1"	19' 1"	21' 1"	23' 1"	25' 1"	27' 1"
Side Opening (including curtain - approx.)	14' 11"	16' 9"	18' 7"	20' 5"	22' 3"	24' 1"

#### NOTES:

- A. Inside length is based on roll-up door; add 1 ½" for swing doors.  
 B. Rear light protector extends beyond rear frame 2 ¼". Add this dimension if body does not have dock extension.  
 \*Inside length is nominal and measured from front wall to inside rear door panel.



Morgan Authorized Distributor



1-800-666-7426

www.morgancorp.com

35 Thousand Oaks Blvd.; P.O. Box 588  
 Morgantown, PA 19543